



**INTERNAL QUALITY ASSURANCE CELL,
SALIPUR AUTONOMOUS COLLEGE, SALIPUR. ODISHA.
754202**

STUDENTS SATISFACTION SURVEY 2020-21

Salipur Autonomous College, Salipur in Odisha is an oldest higher education institute which imparts education to the students of eastern region of the state. It is surrounded by more than ten education institutes in a radius of 10 kms. It conducts Students Satisfaction Survey (SSS) annually to increase its teaching-learning, infrastructure, student support and other welfare amenities. This survey includes the questionnaire recommended by NAAC - Teaching-Learning and Evaluation aspects; in addition the survey has includes the institution infrastructure, welfare aspects, outreach programmes along with other parameters. The organization, guidelines, questionnaire and the results of the SSS are included.

To impart quality education, holistic development and provide competent resources to the society, stakeholder's inputs create a cutting edge in achieving this. Our institute, Salipur Autonomous College is one of the pioneer Higher Education Institution of Odisha imparting General as well as Professional Education. Your participation in the survey will create better avenues for future generations and thereby creating a benchmark in the society.

A student will have to participate in the Students Satisfaction Survey with outmost sincerity to increase the teaching-learning and other aspects of the institution.

2. How well did the teachers prepare for the classes?
 - 4 – Thoroughly
 - 3 – Satisfactorily
 - 2 – Poorly
 - 1 – Indifferently
 - 0 – Won't teach at all
3. How well were the teachers able to communicate?
 - 4-Always effective
 - 3 – Sometimes effective
 - 2-Just satisfactory
 - 1- Generally ineffective
 - 0- Very poor communication
4. The teacher's approach to teaching can best be described as
 - 4- Excellent
 - 3- Very good
 - 2 – Good
 - 1- Fair
 - 0- Unfair
5. Fairness of the internal evaluation process by the teachers:
 - 4- Always fair
 - 3- Usually fair
 - 2- Sometime unfair
 - 1- Usually unfair
 - 0- Unfair
6. Was your performance in assignment discussed with you:
 - 4- Every time
 - 3- Usually
 - 2-Occasionally/sometimes
 - 1-Rarely
 - 0-Never
7. The institute takes active interest in promoting internship, student exchange, field visit opportunities for students.
 - 4 – Regularly
 - 3 – Often
 - 2 – Sometimes
 - 1-Rarely
 - 0- Never

8. The teaching and mentoring process in your institution facilitates you incognitive, social and emotional growth.
 - 4-Significantly
 - 3-Very well
 - 2-Moderately
 - 1-Marginally
 - 0-Not at all
9. The institute provides multiple opportunities to learn and grow
 - 4-Strongly agree
 - 3-Agree
 - 2-Neutral
 - 1-Disagree
 - 0-Strongly disagree
10. Teachers inform you about your expected competencies, course outcomesand programme outcomes.
 - 4-Every time
 - 3-Usually
 - 2-Occasionally/ sometimes
 - 1-Rarely
 - 0-Never
11. Your mentor does a necessary follow-up with an assigned task to you.
 - 4-Every time
 - 3-Usually
 - 2-Occasionally/ sometimes
 - 1-Rarely
 - 0-I don't have a mentor
12. The teachers illustrate the concepts through examplesand applications.
 - 4-Every time
 - 3-Usually
 - 2-Occasionally/ sometimes
 - 1-Rarely
 - 0-Never
13. The teachers identify your strengths and encourage you with providing rightlevel of challenges.
 - 4 – Fully
 - 3 – Reasonably
 - 2 – Partially
 - 1 – Slightly
 - 0– Unable to

14. Teachers are able to identify your weaknesses and help you to overcome them.

4 – Every time

3 – Usually

2 – Occasionally/Sometimes

1 – Rarely

0 – Never

15. The institution makes effort to engage students in the monitoring, review and continuous quality improvement of the teaching learning process.

4-Strongly agree

3-Agree

2-Neutral

1-Disagree

0-Strongly disagree

16. The institute/ teachers use student centric methods, such as experiential learning, participative learning and problem solving methodologies for enhancing learning experiences.

4-To a great extent

3-Moderate

2-Some what

1-Very little

0-Not at all

17. Teachers encourage you to participate in extracurricular activities.

4-Strongly agree

3-Agree

2-Neutral

1-Disagree

0-Strongly disagree

18. Efforts are made by the institute/ teachers to inculcate soft skills, life skills and employability skills to make you ready for the world of work.

4-To a great extent

3-Moderate

2-Some what

1-Very little

0-Not at all

19. What percentage of teachers use ICT tools such as LCD projector, Multimedia, etc. while teaching.

4-Above 90%

3-70 – 89%

2-50 – 69%

1-30 – 49%

0-Below 29%

20.The overall quality of teaching-learning process in your institute is very good.

4-Strongly agree

3-Agree

2-Neutral

1-Disagree

0-Strongly disagree

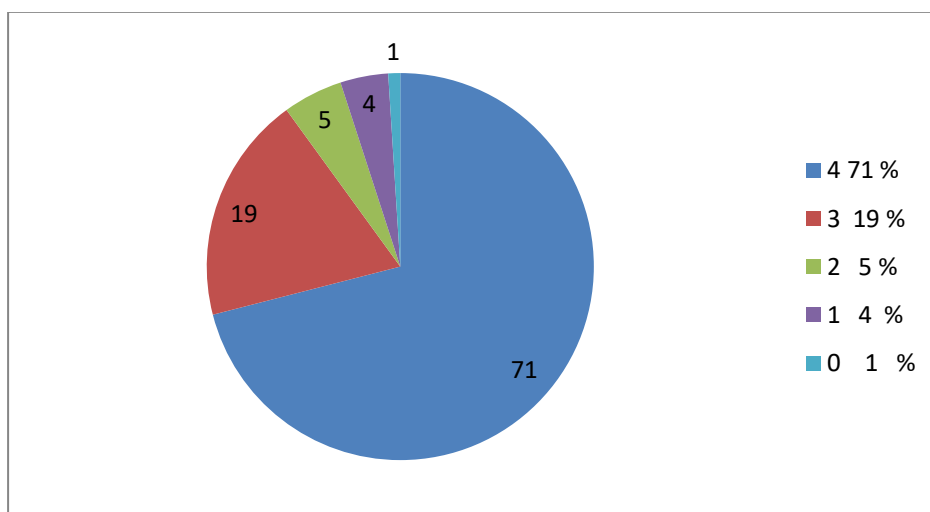
21.Give three observation / suggestions to improve the overall teaching –learning experience in your institution

A student is advised to answer all the questions. Each questionnaire contains 5 options; each student is advised to select one option which is suitable to his/her choice.

The % of students who have participated in the SSS and have given their choice for each parameter are given below:

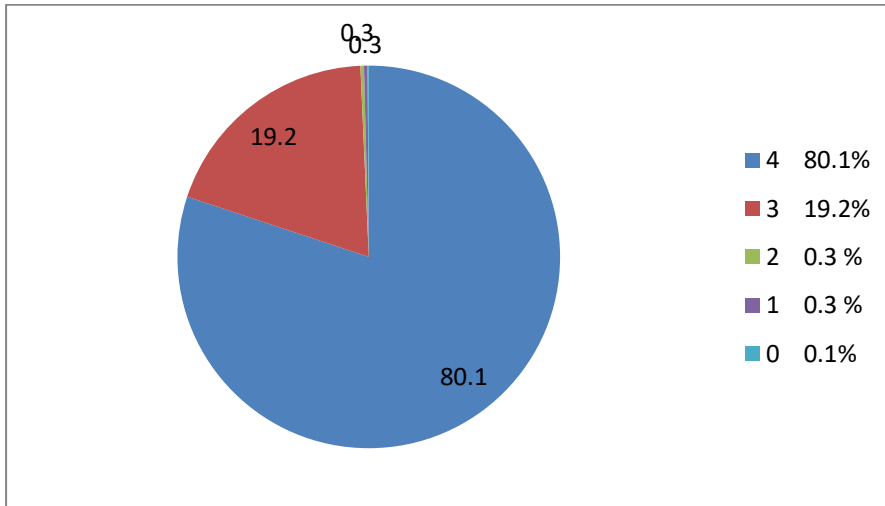
1. How much of the syllabus was covered in the class?

4 – 85 to 100% 3 – 70 to 84% 2 – 55 to 69% 1– 30 to 54% 0 –Below 30%



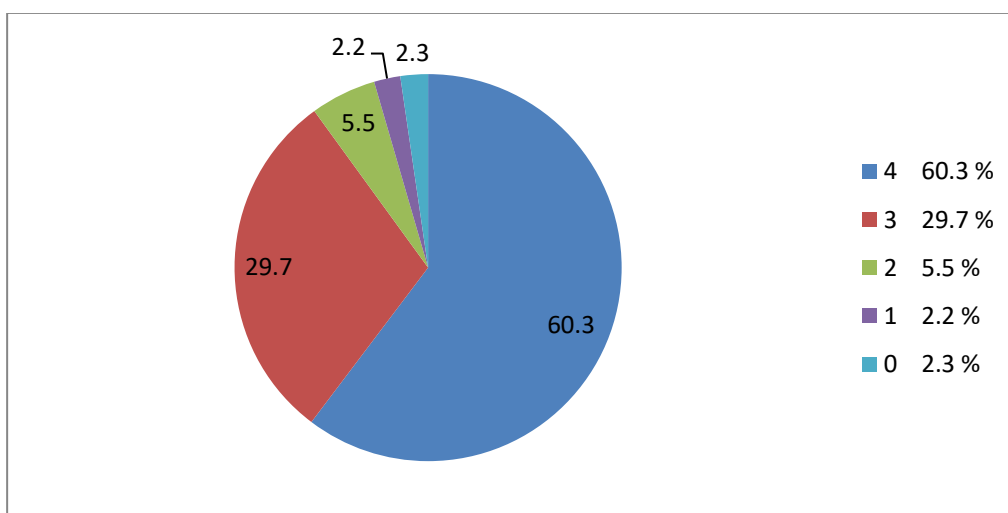
2. How well did the teachers prepare for the classes?

4 - Thoroughly 3 - Satisfactorily 2 - Poorly 1 - Indifferently 0 - Won't teach at all

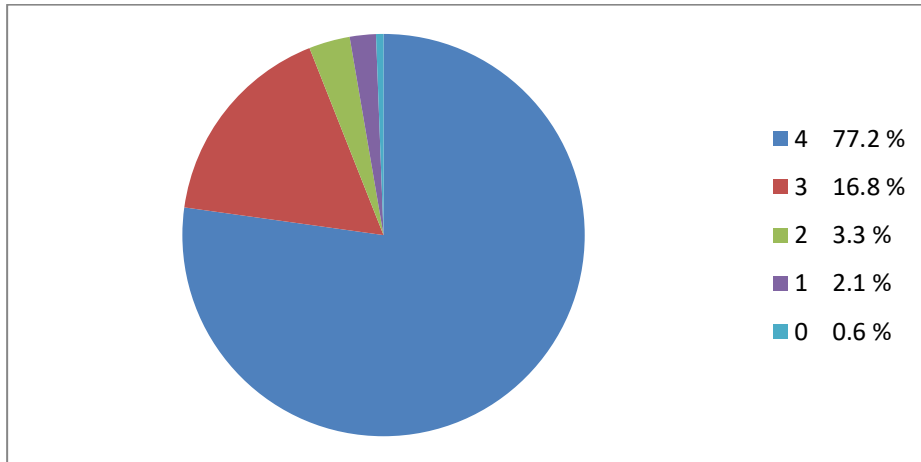


3. How well were the teachers able to communicate?

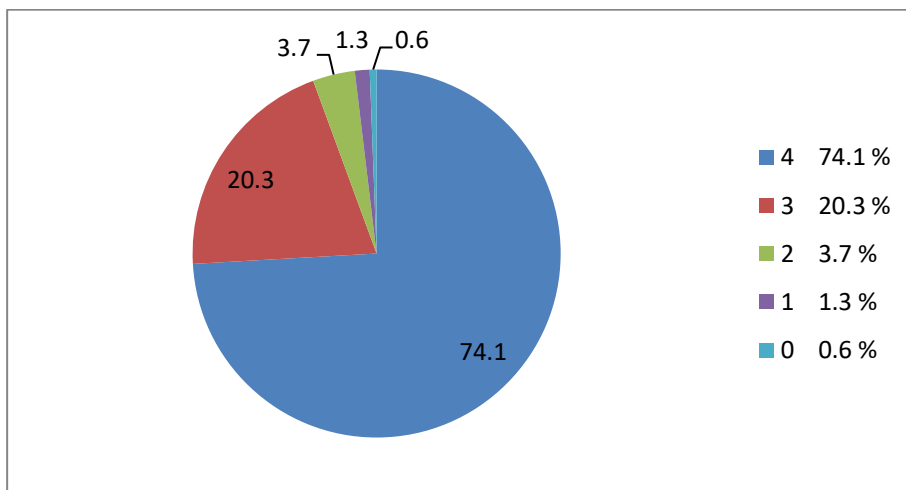
4- Always effective 3 - Sometimes effective 2 - Just satisfactory 1 - Generally ineffective 0- Very poor communication



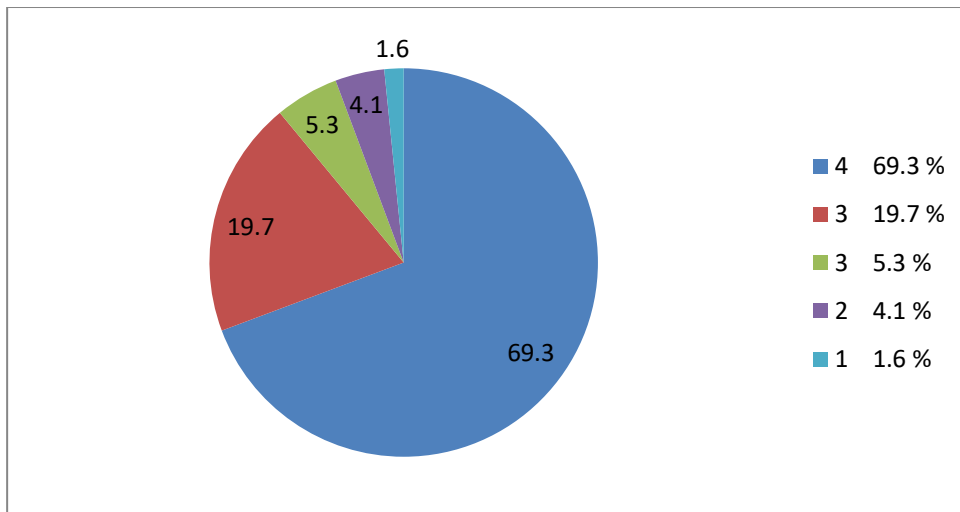
4. The teacher's approach to teaching can best be described as
4- Excellent 3- Very good 2- Good 1-Fair 0-Unfair



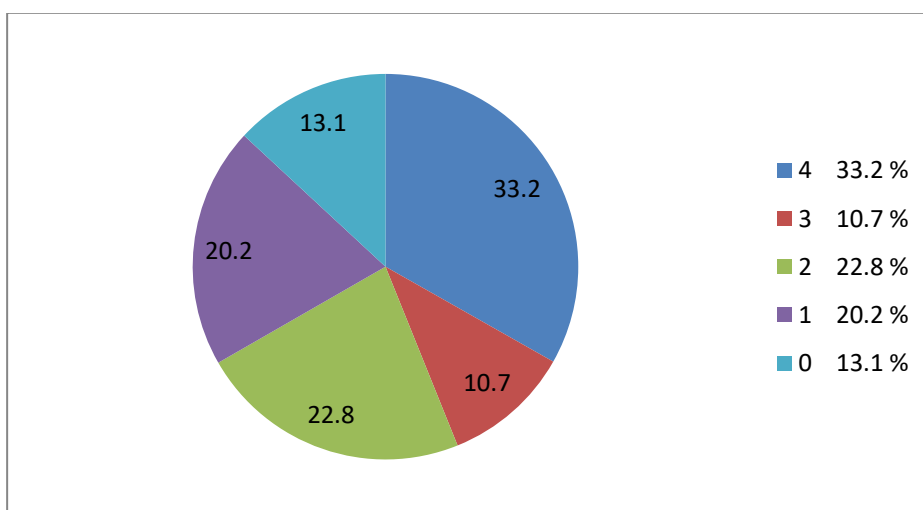
5. Fairness of the internal evaluation process by the teachers:
4- Always fair 3- Usually fair 2- Sometime unfair 1-Usually unfair 0-Unfair



6. Was your performance in assignment discussed with you:
4- Every time 3-Usually 2-Occasionally/sometimes 1-Rarely 0-Never

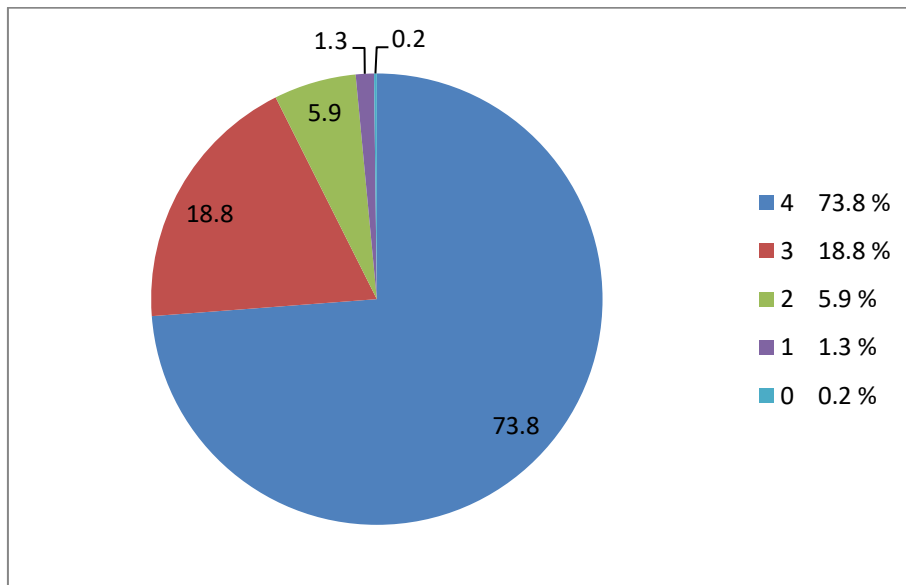


7. The institute takes active interest in promoting internship, student exchange, field visit opportunities for students.
4 - Regularly 3 - Often 2- Sometimes 1-Rarely 0- Never



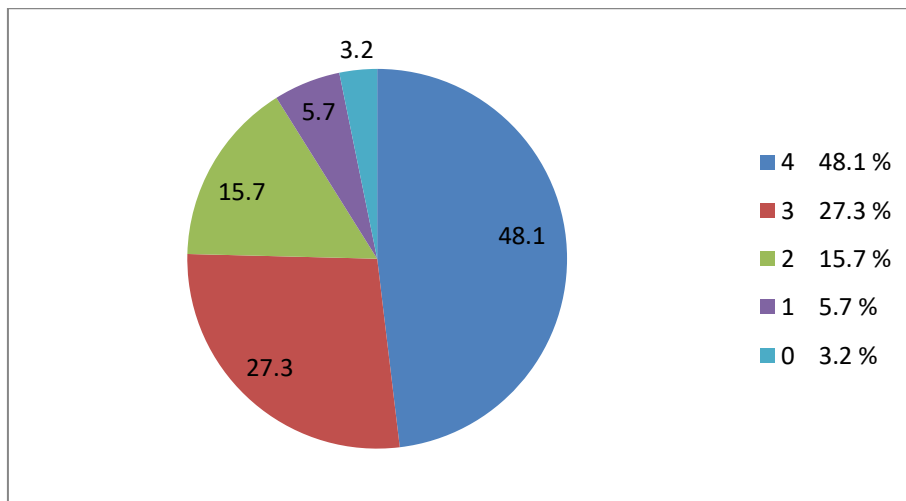
8. The teaching and mentoring process in your institution facilitates you incognitive, social and emotional growth.

4-Significantly 3-Very well 2-Moderately 1-Marginally 0-Not at all



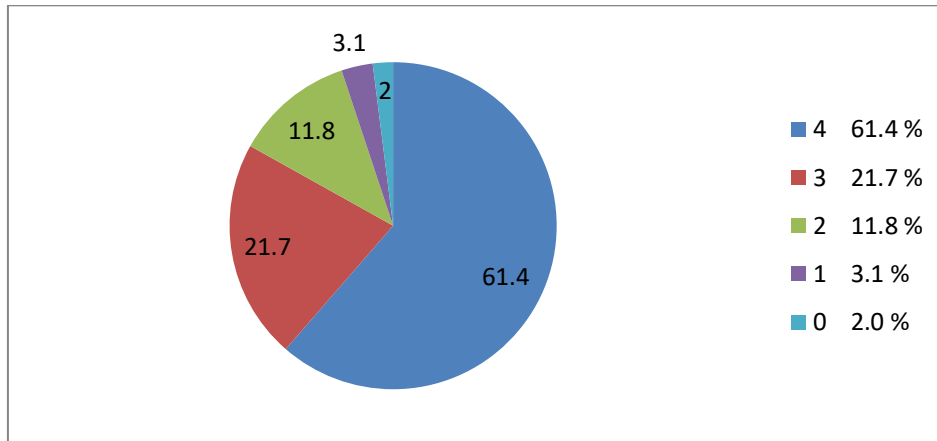
9. The institute provides multiple opportunities to learn and grow

4-Strongly agree 3-Agree 2-Neutral 1-Disagree 0-Stronglydisagree



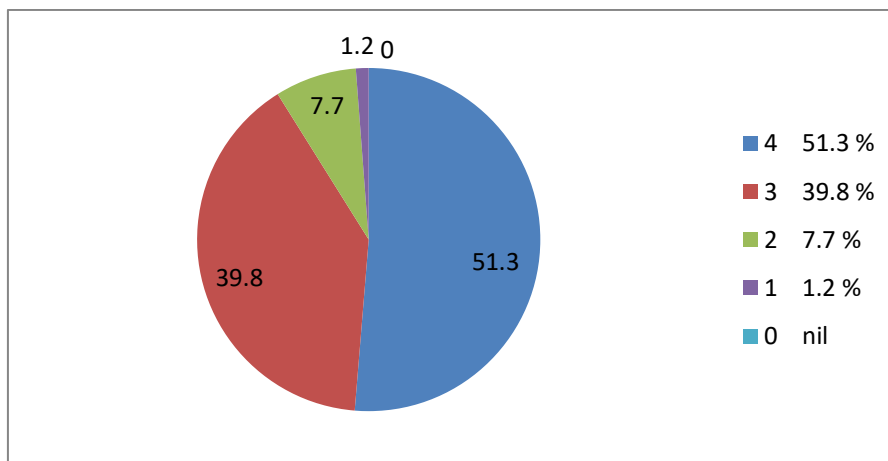
10. Teachers inform you about your expected competencies, course outcomes and programme outcomes.

4-Every time 3-Usually 2-Occasionally/ sometimes 1-Rarely 0-Never



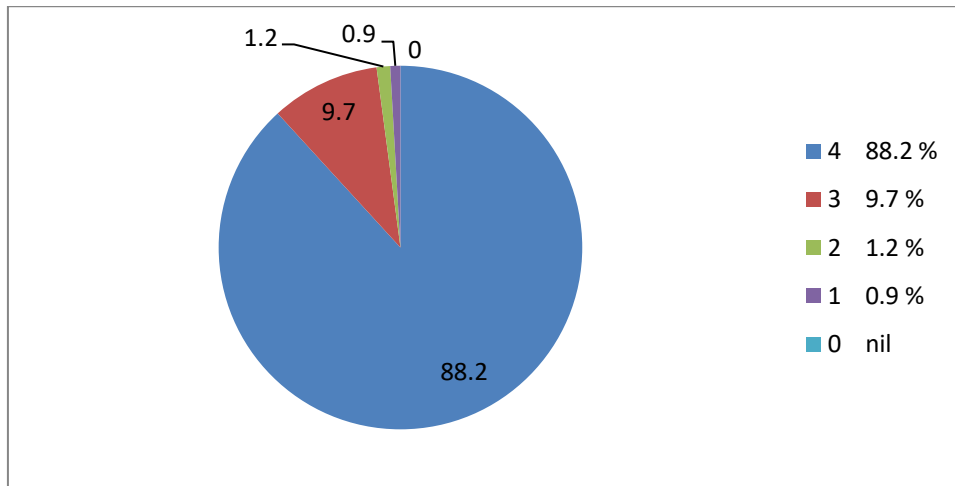
11. Your mentor does a necessary follow-up with an assigned task to you.

4-Every time 3-Usually 2-Occasionally/ sometimes 1-Rarely 0-I don't have a mentor



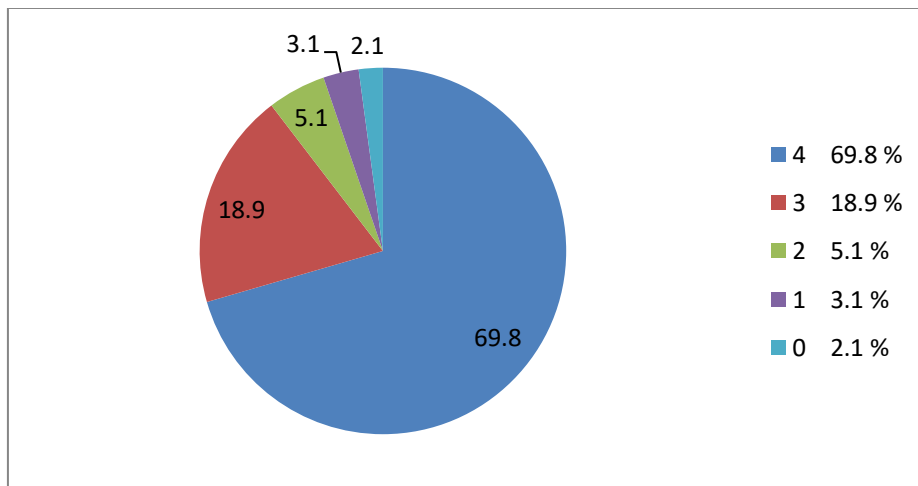
12. The teachers illustrate the concepts through examples and applications.

4-Every time 3-Usually 2-Occasionally/ sometimes 1-Rarely 0-Never



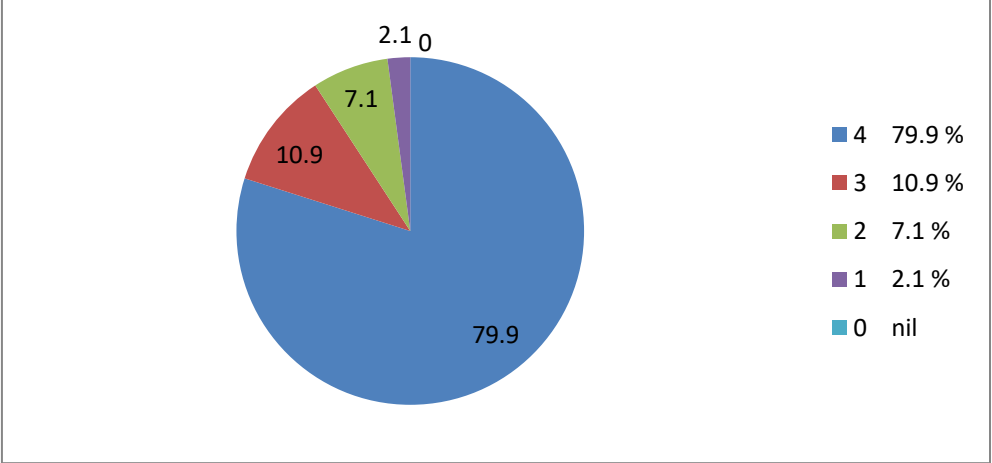
13. The teachers identify your strengths and encourage you with providing rightlevel of challenges.

4 – Fully 3 – Reasonably 2 – Partially 1 – Slightly 0– Unable to



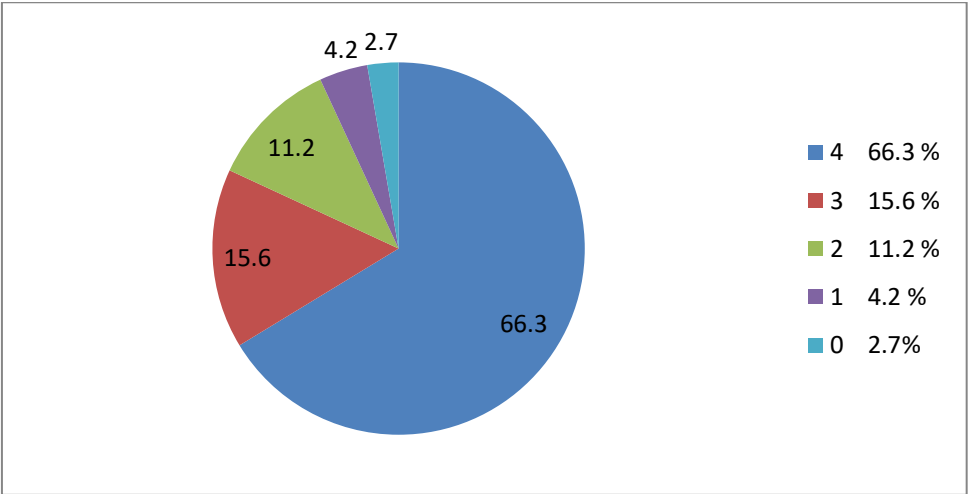
14. Teachers are able to identify your weaknesses and help you to overcome them.

4 - Every time 3 - Usually 2 - Occasionally/Sometimes 1 - Rarely 0 - Never



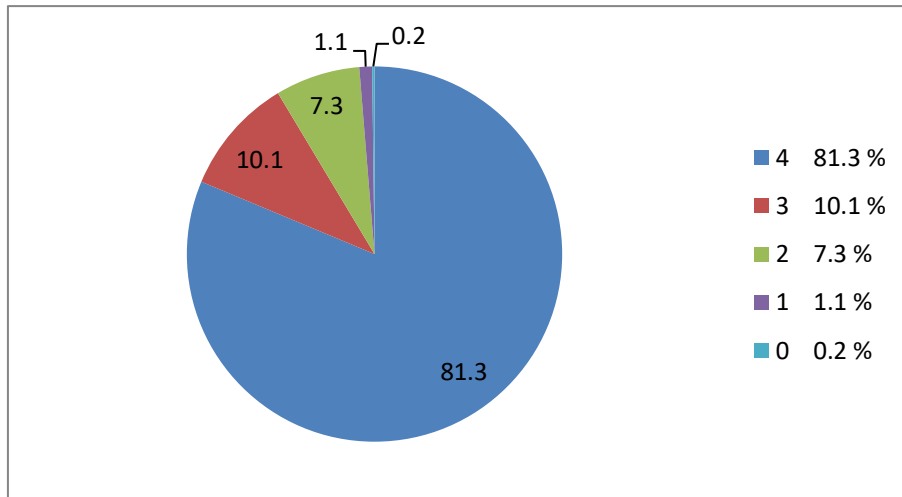
15. The institution makes effort to engage students in the monitoring, review and continuous quality improvement of the teaching learning process.

4-Strongly agree 3-Agree 2-Neutral 1-Disagree 0-Strongly disagree



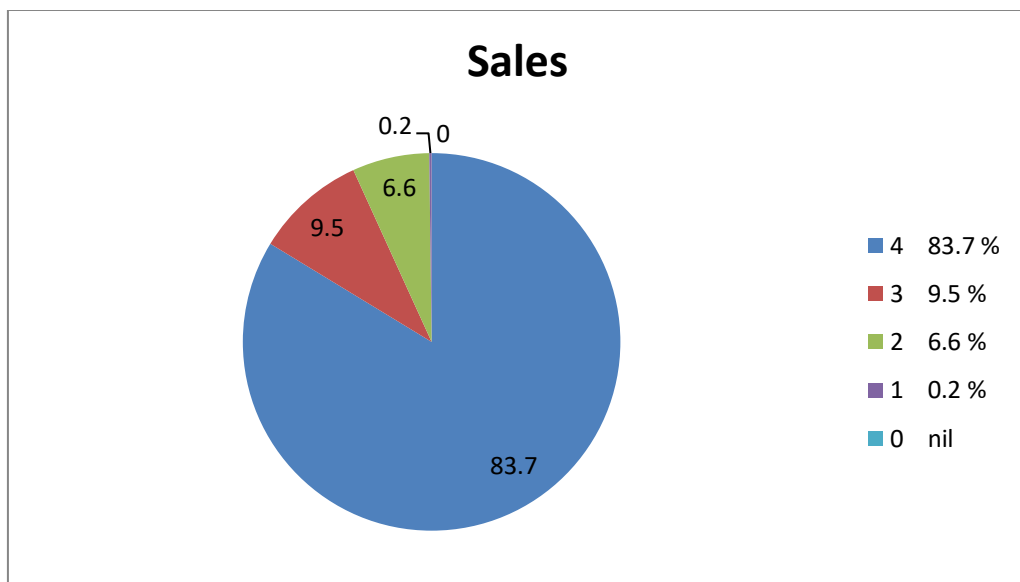
16. The institute/ teachers use student centric methods, such as experiential learning, participative learning and problem solving methodologies for enhancing learning experiences.

4-To a great extent 3-Moderate 2-Somewhat 1-Very little 0-Not at all



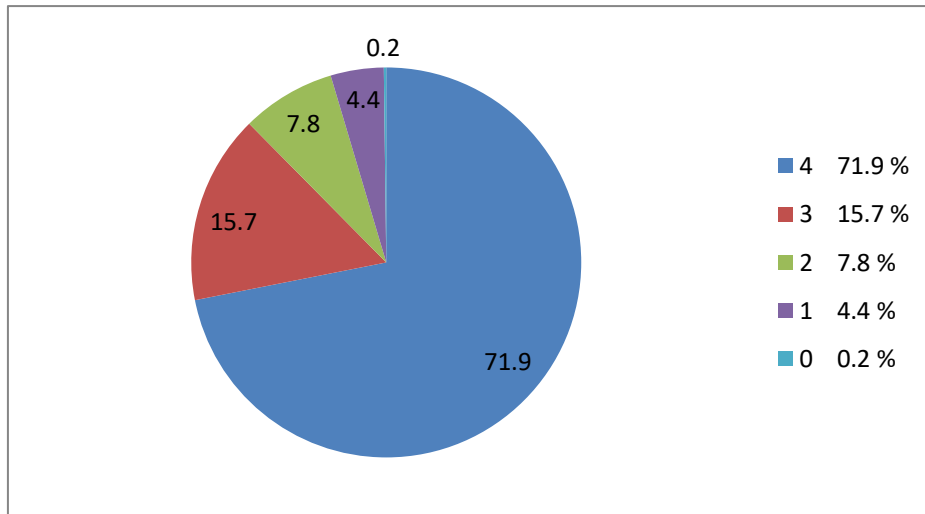
17. Teachers encourage you to participate in extracurricular activities.

4-Strongly agree 3-Agree 2-Neutral 1-Disagree 0-Strongly disagree



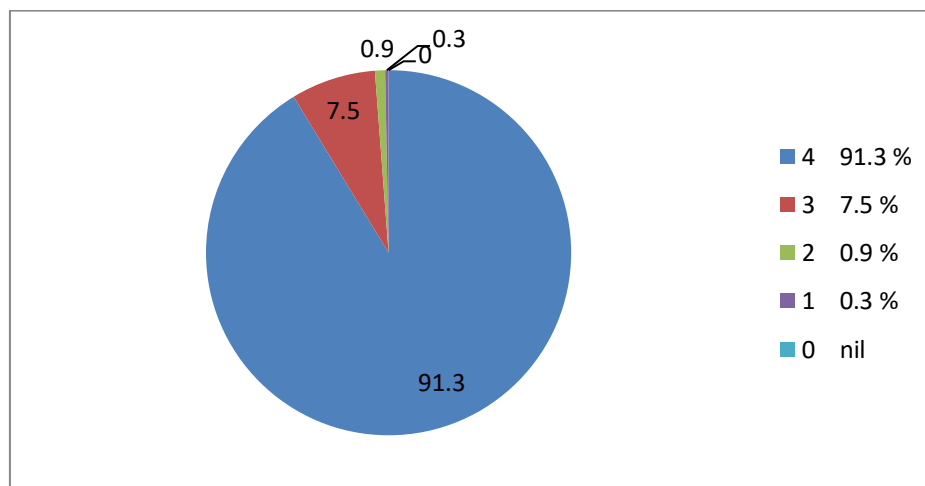
18. Efforts are made by the institute/ teachers to inculcate soft skills, life skills and employability skills to make you ready for the world of work.

4-To a great extent 3-Moderate 2-Somewhat 1-Very little 0-Not at all



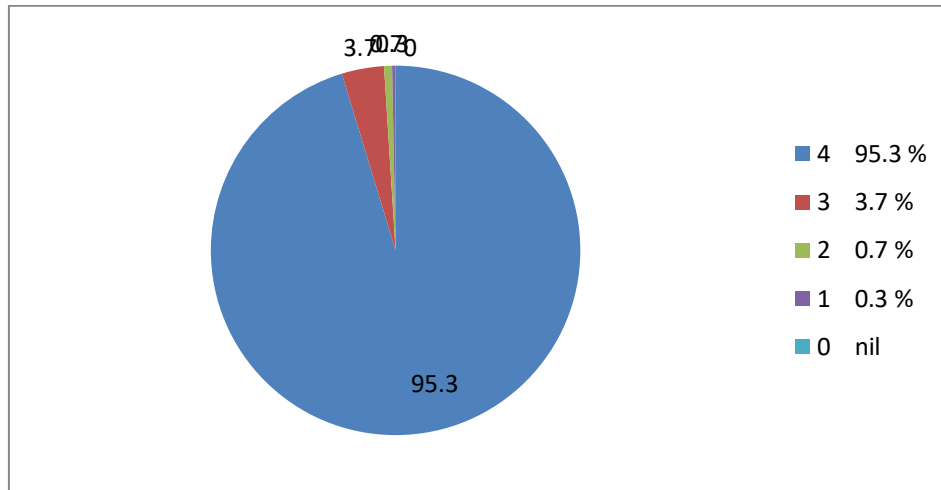
19. What percentage of teachers use ICT tools such as LCD projector, Multimedia, etc. while teaching.

4-Above 90% 3-70 - 89% 2-50 - 69% 1-30 - 49%
0-Below 29%



20. The overall quality of teaching-learning process in your institute is very good.

4-Strongly agree 3-Agree 2-Neutral 1-Disagree 0-Strongly disagree



These were the findings of the SSS done for the academic year 2020-21, in which 803 students participated in the survey.